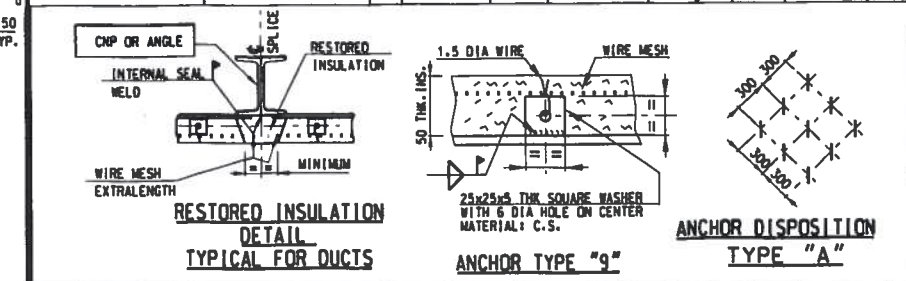



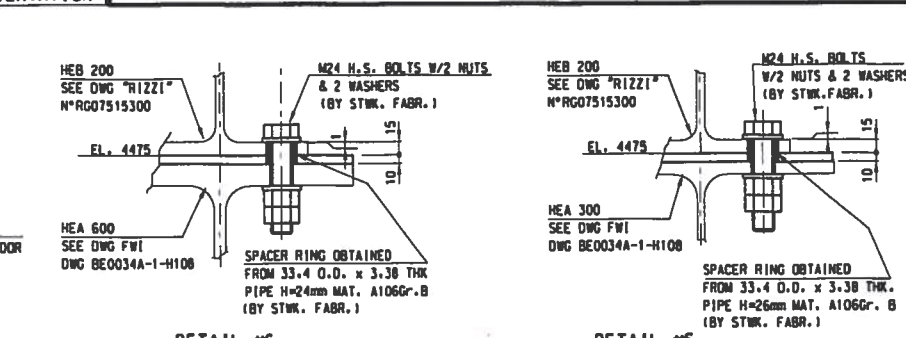
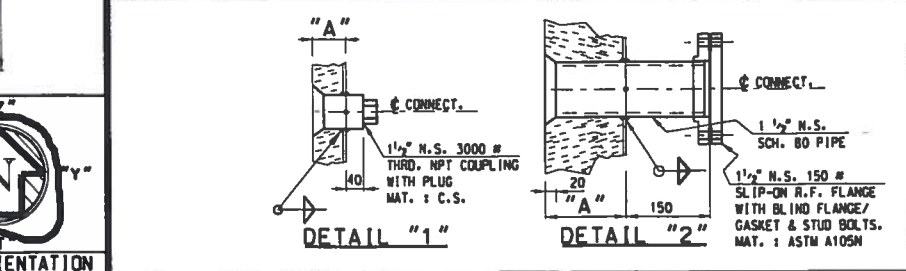


COLD GAS DUCT INSULATING AND RETAINERS										
POSITION	INSULATIONS			RETAINERS						
	DESCRIPTION	THK mm.	REQUISITION ITEM N°	INSTALLED	DESCRIPTION	MAT.L	TYPE	ANCHOR DISP.	REQUIS. ITEM N°	WELD SITE
COLD GAS DUCT FROM AIR PREHEATER TO FAN B-2	INSULATING CONCRETE ASTM C 401 CL. P (MIX LH1+4)	50	(1871003-1)	FIELD MANUAL	WIRE MESH 50x50x3 DIA	C.S.	/	"A"	(1873A01-3)	FIELD
COLD GAS DUCT FROM FAN B-2 TO VERTICAL DUCT					25x25x5 THK SQUARE WASHER	C.S.	9		(1873A01-1)	
COLD GAS VERTICAL DUCT TO HEATER STACK					1.5 DIA WIRE	C.S.	/		(1873A01-5)	



-INSTRUMENTS CONNECTIONS-							
SYMBOL	INSTRUMENT TYPE	POSITION	NO. REQ.	SIZE	PIPE SLEEVE	DTL	DIM "A"
	PRESSURE INDICATOR	COLD GAS DUCT BEFORE FAN B-2	1	1 1/2" N.S. 3000W THRD. NPT CPLG. W/PLUG		#1	55
	TEMPERATURE TRANSMITTER	COLD GAS DUCT BEFORE FAN B-2	1	1 1/2" N.S. 150W R.F. SLIP ON FLG W/BLIND	1 1/2" N.S. SCH.80 MAT. S.S. TP 304	#2	55
	TEMPERATURE TRANSMITTER	COLD GAS DUCT AFTER FAN B-2	1	1 1/2" N.S. 150W R.F. SLIP ON FLG W/BLIND	1 1/2" N.S. SCH.80 MAT. S.S. TP 304	#2	55



FOR N° 2 FIX POINTS ON "Z" END  
(SEE PLAN VIEW ON DWG. BE0034A-1-H084)

REFERENCE DRAWINGS		
DESCRIPTION	NUMBER	
S.A. COLD FLUE GAS DUCT SH.1 OF 2	0E0034A-1-H085	
S.A. STACK & STUBS	0E0034A-1-H092	
S.A. STACK & STUBS DETAIL	0E0034A-1-H093	

REFERENCE STANDARD	
DESCRIPTION	NUMBER
ACCESS DOOR	STD. N° M12-3-H255/2

**GENERAL NOTES**

- 1) FOR STEELWORK COMPANION DRAWING LIST SEE DWG BE0034-1H078
- 2) TEXTILE GASKET & ADHESIVE SHALL BE INSTALLED IN FIELD

4	19-09-08	SPLICE ON TWO SECTORS DELETED AND SPLICE ON BEND ADDED	VIR	VIR	JAN
3	30-05-08	REVISED AS SHOWN	VIR	VIR	JAN
2	01-04-08	HOLD DEFINED & REVISED AS SHOWN	VIR	VIR	JAN
1	25-03-08	REVISED AS SHOWN	VIR	VIR	JAN
0	11-03-08	CHECKED & CORRECTED	MC	VIR	JAN
A	22-12-07		MC		

LETTER	DATE	DESCRIPTION	BY	CHKD	APP.

<p>LONGITUDINAL SPLICE 80±8 (STAGGERED AT 180° EACH MODULE)</p>	REVISIONS  <b>STEEL ARRANGEMENT</b> <b>COLD FLUE GAS DUCT SH.2 OF 2</b> <b>REFORMER HEATER H-1</b> FOR <b>SLAVNEFT - YANOS</b> <b>YAROSLAVL RUSSIAN FEDERATION</b>		APPROVED FOR CONSTRUCTION  DWG. REV. <b>0</b> DATE <b>11-03-08</b> SIGNATURE <b>L.S.</b> ORDER N° SUPPLIER CONTRACT N° <b>2-BE-0034A</b>
	<b>FOSTER WHEELER</b>		THIS DWG. SUPERSEDED BY    SCALE 1:50 THIS DWG. SUPERSEDES DWG. N° <b>BE0034A-1-1085</b>
	THIS DRAWING IS THE PROPERTY OF FOSTER WHEELER ITALIANA AND IS LENT WITHOUT CONSIDERATION OTHER THAN THE BORROWER'S AGREEMENT THAT IT SHALL NOT BE REPRODUCED COPIED LENT OR DISPOSED OF DIRECTLY OR INDIRECTLY, NOR USED FOR ANY PURPOSE OTHER THAN THAT FOR WHICH IT IS SPECIFICALLY FURNISHED THE APPARATUS SHOWN IN THE DRAWING IS COVERED BY PATENTS.		REV. <b>4</b>
	CAD FILE NAME		