

AUTOMATIC BUTTERFLY VALVE**PROJECT SPECIFICATION**

Number

E-H6279-241

Rev.

3

Sheet : 4 of 15

By : F. Heyman

R
E
V

1	TAG NO.	U-XV55012, 55022, 55032, 55042, 55052, 55062
2		U-XV55072, 55082, 55092, 55102, 55112, 55122
3	QUANTITY	12
4	SERVICE	PRODUCT
5	MEDIUM COMPOSITION MOLECULAR WEIGHT	HYDROGEN / H ₂ / 2,02
6	AMBIENT TEMPERATURE MIN. / MAX.	-46 / +36 °C ACTUATOR POSITIONER LIMIT SW (note 1)
7	MINIMUM DESIGN METAL TEMPERATURE	-34 °C FOR VALVE BODY AND SEALS
8	OPERATING TEMPERATURE MIN. / MAX.	43,0 / 43,0 °C
9	OPERATING FLOW COND. 1 / 2 / 3	15105 / xxxxx / 22400 Nm ³ /h
10	PRESSURE UPSTREAM COND. 1 / 2 / 3	19,1 / xxx / 19,1 kg/cm ² g
11	DP COND. 1 / 2 / 3	0,056 / xxx / 0,121 kg/cm ²
12	DP IN CLOSED POSITION	20,0 kg/cm ²
13	REQUIRED C _v COND. 1 / 2 / 3	162 / xxx / 162
14	VALVE BODY SIZE RATING STYLE	DN 80 / 300 lbs / DOUBLE FLANGED
15	SELECTED CV CHARACTERISTIC	180 / ON-OFF
16	BODY MATERIAL	ASTM 352 LCB (-34°C)
17	FLANGE RATING FLANGE FACE FINISH	300 lbs / SMOOTH FINISH 3,2 - 6,3 µmRA
18	FACE TO FACE STD. FACE TO FACE LENGTH	LARGE FEMALE FACE ANSI B16.5a / 180MM
19	VALVE SERVICE STANDARD	PSA HIGH CYCLING DUTY
20	VALVE CYCLIC SERVICE UNI / BI-DIRECTIONAL	UNIDIRECTIONAL
21	VALVE INITIAL CONTROL POSITION	
22	SHAFT POSITION FLOW DOWN / UPSTREAM	FLOW SHAFT DOWNSTREAM
23	BEARINGS AND EXCLUDER RING MATERIAL	FOR HIGH CYCLE BUTTERFLY VALVE
24	SHAFT PACKING TYPE MATERIAL	LIFE LOADED / PTFE
25	DISC PINS SHAFT MATERIAL	ASTM A487 CA 6 NM / MFR STD / ASME 420
26	SEAT TYPE MATERIAL	SOFT SEAT / FKM (VITON)
27	LEAKAGE RATE (CLASS TO B16.104)	CLASS VI BUBBLE TIGHT
28	ACTUATOR TYPE / MOUNTING POSITION	PISTON, SPRING RETURN / A-HU
29	ACTUATOR SIZE / AIR CONNECTION SIZE	B1JU10/40C / 3/8" NPT
30	AIR SUPPLY PRESSURE MIN. / NORM. / MAX.	3,5 / 4,5 / 6,0 kg/cm ² g
31	SPRING TYPE / ACTION	SINGLE SPRING / SPRING TO CLOSE
32	NUMBER OF CYCLES PER YEAR	+/- 100000
33	VALVE DUTY ON/OFF or CONTROL	HIGH CYCLE DUTY / ON-OFF
34	VALVE POSITIONER MODEL	NOT REQUIRED
35	POSITIONER TYPE	
36	CALIBRATED RANGE	
37	AIR SUPPLY PRESSURE / AIR CONNECTION	4,5 kg/cm ² g / NPTF
38	AIR FILTER / REGULATOR	NOT REQUIRED
39	SOLENOID	SOLENOID INSTALLED BY OTHERS
40	PROXIMITY SWITCH / POSITION	STONEL SR44B2MDS, EEx ia IIC T6 / CLOSED
41	TRAVEL STOP	STANDARD
42	TUBING & FITTING MATERIAL / SIZE	NOT REQUIRED
43	VALVE SUPPLIER	
44	VALVE TYPE NO.	3" CL300 MAPAG AC 25-Z- B1JU10/40C-LS
45	REMARKS :	
46		
47		

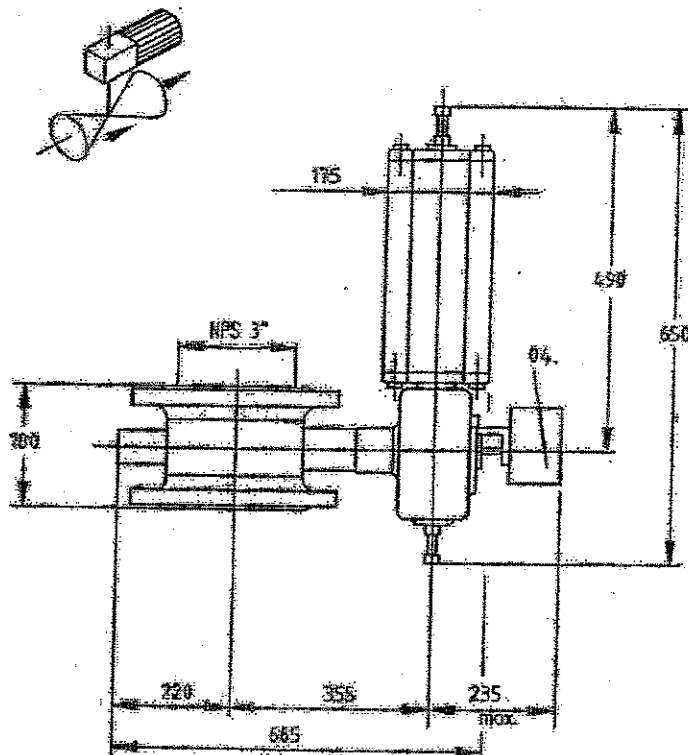
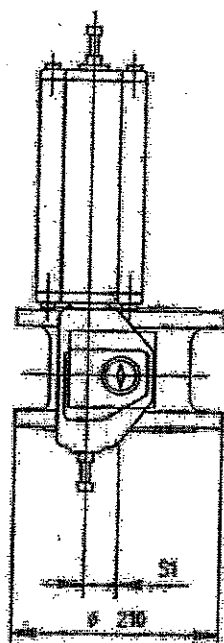
This information is proprietary and shall not be disclosed outside your organisation, nor shall it be duplicated, used, or disclosed for any purpose other than as permitted under written agreement with UOP.



C.B. Лохматов

Dimensions are maximum values (given in millimeters). Weight is approximate value (given in kgs).

MOUNTING POSITION : A-HU



BUTTERFLY VALVE SIZE 080 (3")

RATING ACC. TO ANSI class 300

FLANGE DRILLING ACC. TO ANSI class 300

FACING : ASME B16.5 Large female (Ra 3.2-6.3)

ACTUATOR

TYPE : B1JU10/400

ACCESSORIES

04. LIMIT SWITCH STONEL SR44B5MDS WITH TWO DIN 19234 SENSORS,
CABLE ENTRY M20x1.5 (2 pcs)

PIPING AND FITTINGS : /

TOTAL WEIGHT : 80 kg

SO NO. : 113519-002

VENDOR / ORDER NO. : METSO AUTOMATION N.V. / 08-03113-F

CUSTOMER / ORDER NO. : UOP N.V. / H6279

TAG. NO. : U-XV55012, U-XV55022, U-XV55032, U-XV55042, U-XV55052, U-XV55062,
U-XV55072, U-XV55082, U-XV55092, U-XV55102, U-XV55112, U-XV55122

1	03.03.27	CK
ORIG	03.02.17	CK



APPROVED : CK

WITENHEIM
FRANCE

CERTIFIED DIMENSION DRAWING

REMOTE SHUT-OFF VALVE

DIM113519-002

3" CL300 MAPAG AC25-Z-B1JU10/40C-LS

Uop

UOP N.V. Noorderlaan 147, B-2030 Antwerp, Belgium

AUTOMATIC BUTTERFLY VALVE**PROJECT SPECIFICATION**

Number

E-H6279-241

Sheet : 6 of 15

By : F. Heyman

Rev.

3

R
E
V

1	TAG NO.	U-XV55015, 55025, 55035, 55045, 55055, 55065
2		U-XV55075, 55085, 55095, 55105, 55115, 55125
3	QUANTITY	12
4	SERVICE	EQUALISATION 1 & 2
5	MEDIUM COMPOSITION MOLECULAR WEIGHT	HYDROGEN / H ₂ / 2,02
6	AMBIENT TEMPERATURE MIN. / MAX.	- 46 / + 36 °C ACTUATOR POSITIONER LIMIT SW (note 1)
7	MINIMUM DESIGN METAL TEMPERATURE	-34 °C FOR VALVE BODY AND SEALS
8	OPERATING TEMPERATURE MIN. / MAX.	43,0 / 43,0 °C
9	OPERATING FLOW COND. 1 / 2 / 3	43920 / xxxxx / 53980 Nm ² /h
10	PRESSURE UPSTREAM COND. 1 / 2 / 3	10,55 / xxx / 14,82 kg/cm ² g
11	DP COND. 1 / 2 / 3	0,35 / xxx / 0,38 kg/cm ²
12	DP IN CLOSED POSITION	20,0 kg/cm ²
13	REQUIRED C _v COND. 1 / 2 / 3	272 / xxx / 272
14	VALVE BODY SIZE RATING STYLE	DN 100 / 300 lbs / DOUBLE FLANGED
15	SELECTED CV CHARACTERISTIC	400 / ON - OFF
16	BODY MATERIAL	ASTM 352 LCB (-34°C)
17	FLANGE RATING FLANGE FACE FINISH	300 lbs / SMOOTH FINISH 3.2 - 6.3 µmRA
18	FACE TO FACE STD. FACE TO FACE LENGTH	LARGE FEMALE FACE ANSI B16.5a / 190MM
19	VALVE SERVICE STANDARD	PSA HIGH CYCLING DUTY
20	VALVE CYCLIC SERVICE UNI / BI-DIRECTIONAL	BI-DIRECTIONAL
21	VALVE INITIAL CONTROL POSITION	
22	SHAFT POSITION FLOW DOWN / UPSTREAM	FLOW SHAFT DOWNSTREAM
23	BEARINGS AND EXCLUDER RING MATERIAL	HIGH CYCLE UPGRADE KIT
24	SHAFT PACKING TYPE MATERIAL	LIFE LOADED / PTFE
25	DISC PINS SHAFT MATERIAL	ASTM A487 CA 6 NM / MFR STD / ASME 420
26	SEAT TYPE MATERIAL	SOFT SEAT / FKM (VITON)
27	LEAKAGE RATE (CLASS TO B16.104)	CLASS VI BUBBLE TIGHT
28	ACTUATOR TYPE / MOUNTING POSITION	PISTON, SPRING RETURN / A-HU
29	ACTUATOR SIZE / AIR CONNECTION SIZE	B1JU10/40C / 3/8" NPT
30	AIR SUPPLY PRESSURE MIN. / NORM. / MAX.	3,5 / 4,5 / 6,0 kg/cm ² g
31	SPRING TYPE / ACTION	SINGLE SPRING / SPRING TO CLOSE
32	NUMBER OF CYCLES PER YEAR	+/- 400000
33	VALVE DUTY ON/OFF or CONTROL	HIGH CYCLE DUTY / ON/OFF
34	VALVE POSITIONER MODEL	NOT REQUIRED
35	POSITIONER TYPE	
36	CALIBRATED RANGE	
37	AIR SUPPLY PRESSURE / AIR CONNECTION	4,5 kg/cm ² g / NPTF
38	AIR FILTER / REGULATOR	NOT REQUIRED
39	SOLENOID	SOLENOID INSTALLED BY OTHERS
40	PROXIMITY SWITCH / POSITION	STONEL SR44B2MDS, EEx Ia IIC T6 / CLOSED
41	TRAVEL STOP	STANDARD
42	TUBING & FITTING MATERIAL / SIZE	NOT REQUIRED
43	VALVE SUPPLIER	
44	VALVE TYPE NO.	4" CL300 MAPAG AC 25 B1JU10/40C -LS
45	REMARKS :	
46		
47		

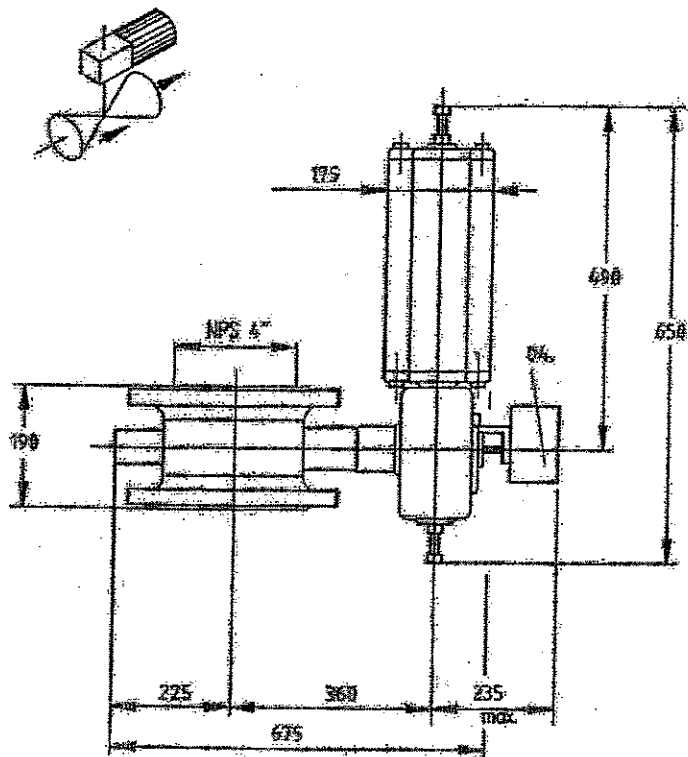
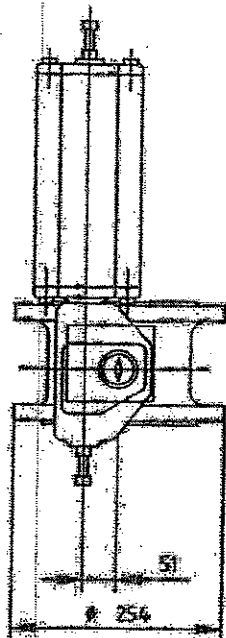
This information is proprietary and shall not be disclosed outside your organisation, nor shall it be duplicated, used, or disclosed for any purpose other than as permitted under written agreement with UOP.



C.B. Лохматов

Dimensions are maximum values (given in millimeters). Weight is approximate value (given in Kgs).

MOUNTING POSITION : A-HU



BUTTERFLY VALVE SIZE 100 (04")
 RATING ACC. TO ANSI class 300
 FLANGE DRILLING ACC. TO ANSI class 300
 FACING : ASME B16.5 Large female (Ra 3.2-6.3)

ACTUATOR
 TYPE : B1JU10/40C

ACCESSORIES

04. LIMIT SWITCH STONEL SR4-ESMDS WITH TWO DIN 19234 SENSORS.
 CABLE ENTRY M20x1.5 (2 pcs) ⚠

PIPING AND FITTINGS : /
 TOTAL WEIGHT : 100 Kg

SO NO. : 113519-004
 VENDOR / ORDER NO. : METSO AUTOMATION N.V. / 08-03113-P

CUSTOMER / ORDER NO. : UOP N.V. / H6279

TAG. NO. : U-XV55015, U-XV55025, U-XV55035, U-XV55045, U-XV55055, U-XV55065,
 U-XV55075, U-XV55085, U-XV55095, U-XV55105, U-XV55115, U-XV55125

1	03.03.27	CK
ORIG	03.02.17	CK



APPROVED : CK

[Signature]

Desig : 113519-004

WITTENHEIM
FRANCE

CERTIFIED DIMENSION DRAWING

REMOTE SHUT-OFF VALVE

DIM113519-004

4" CL300 MAPAG AC25-Z-B1JU10/40C-LS

UOP

UOP N.V. Noorderlaan 147, B-2030 Antwerp, Belgium

AUTOMATIC BUTTERFLY VALVE**PROJECT SPECIFICATION**

Number

E-H6279-241

Rev.

3

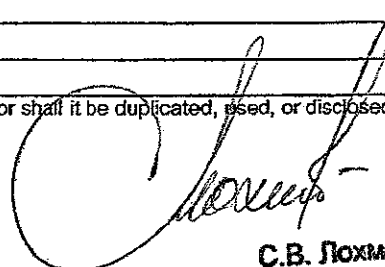
Sheet : 7 of 15

By : F. Heyman

R
E
V

1	TAG NO.	U-XV55016, 55026, 55036, 55046, 55056, 55066
2		
3	QUANTITY	6
4	SERVICE	EQUALISATION 3
5	MEDIUM COMPOSITION MOLECULAR WEIGHT	HYDROGEN / H ₂ / 2,02
6	AMBIENT TEMPERATURE MIN. / MAX.	-46 / +36 °C ACTUATOR POSITIONER LIMIT SW (note 1)
7	MINIMUM DESIGN METAL TEMPERATURE	-34 °C FOR VALVE BODY AND SEALS
8	OPERATING TEMPERATURE MIN. / MAX.	38.0 / 43.0 °C
9	OPERATING FLOW COND. 1 / 2 / 3	xxx / xxx / 21070 Nm ³ /h
10	PRESSURE UPSTREAM COND. 1 / 2 / 3	xxx / xxx / 6,65 kg/cm ² g
11	DP COND. 1 / 2 / 3	xxx / xxx / 0,34 kg/cm ²
12	DP IN CLOSED POSITION	20,0 kg/cm ²
13	REQUIRED C _v COND. 1 / 2 / 3	xxx / xxx / 162
14	VALVE BODY SIZE RATING STYLE	DN 80 / 300 lbs / DOUBLE FLANGED
15	SELECTED C _v CHARACTERISTIC	180 / ON-OFF
16	BODY MATERIAL	ASTM 352 LCB (-34°C)
17	FLANGE RATING FLANGE FACE FINISH	300 lbs / SMOOTH FINISH 3.2 - 6.3 µmRA
18	FACE TO FACE STD. FACE TO FACE LENGTH	LARGE FEMALE FACE ANSI B16.5a / 180MM
19	VALVE SERVICE STANDARD	PSA HIGH CYCLING DUTY
20	VALVE CYCLIC SERVICE UNI / BI-DIRECTIONAL	BI-DIRECTIONAL
21	VALVE INITIAL CONTROL POSITION	
22	SHAFT POSITION FLOW DOWN / UPSTREAM	FLOW SHAFT DOWNSTREAM
23	BEARINGS AND EXCLUDER RING MATERIAL	HIGH CYCLE UPGRADE KIT
24	SHAFT PACKING TYPE MATERIAL	LIFE LOADED / PTFE
25	DISC PINS SHAFT MATERIAL	ASTM A487 CA 6 NM / MFR STD / ASME 420
26	SEAT TYPE MATERIAL	SOFT SEAT / FKM (VITON)
27	LEAKAGE RATE (CLASS TO B16.104)	CLASS VI BUBBLE TIGHT
28	ACTUATOR TYPE / MOUNTING POSITION	PISTON, SPRING RETURN / A-HU
29	ACTUATOR SIZE / AIR CONNECTION SIZE	B1JU10/40C / 3/8" NPT
30	AIR SUPPLY PRESSURE MIN. / NORM. / MAX.	3,5 / 4,5 / 6,0 kg/cm ² g
31	SPRING TYPE / ACTION	SINGLE SPRING / SPRING TO CLOSE
32	NUMBER OF CYCLES PER YEAR	+/- 200000
33	VALVE DUTY ON/OFF or CONTROL	HIGH CYCLE DUTY / ON-OFF
34	VALVE POSITIONER MODEL	NOT REQUIRED
35	POSITIONER TYPE	
36	CALIBRATED RANGE	
37	AIR SUPPLY PRESSURE / AIR CONNECTION	4,5 kg/cm ² g / NPTF
38	AIR FILTER / REGULATOR	NOT REQUIRED
39	SOLENOID	SOLENOID INSTALLED BY OTHERS
40	PROXIMITY SWITCH / POSITION	SolaR, EEx ia IIC T6 / CLOSED
41	TRAVEL STOP	STANDARD
42	TUBING & FITTING MATERIAL / SIZE	NOT REQUIRED
43	VALVE SUPPLIER	
44	VALVE TYPE NO.	3" CL300 AC25 B1JU10/40-LS
45	REMARKS :	
46		
47		

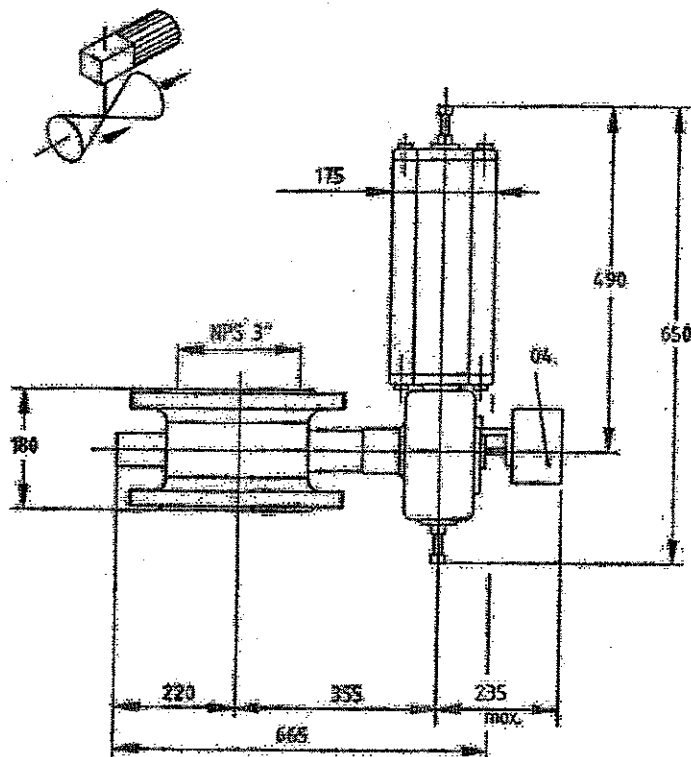
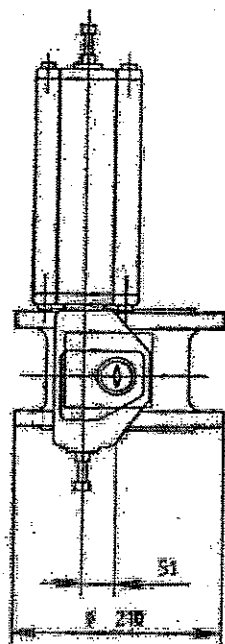
This information is proprietary and shall not be disclosed outside your organisation, nor shall it be duplicated, used, or disclosed for any purpose other than as permitted under written agreement with UOP.



C.B. Loxmatov

Dimensions are maximum values (given in millimeters). Weight is approximate value (given in kgs).

MOUNTING POSITION : A-HJ



BUTTERFLY VALVE SIZE 080 (03")
 RATING ACC. TO ANSI class 300
 FLANGE DRILLING ACC. TO ANSI class 300
 FINISH : ASME B16.5 Large female (Ra 3.2-6.3)

ACTUATOR
 TYPE : B1JU10/40C

ACCESSORIES

04. LIMIT SWITCH STONEL SR4-B5MDS WITH TWO DIN 19234 SENSORS.
 CABLE ENTRY M20x1.5 (2 pcs)

PIPING AND FITTINGS : /
 TOTAL WEIGHT : 80 kg

SO. NO. : 113519-005
 VENDOR / ORDER NO. : METSO AUTOMATION N.V. / 05-03113-P

CUSTOMER / ORDER NO. : UOP N.V. / H6279

TAG. NO. : U-XV55015, U-XV55026, U-XV55036,
 U-XV55046, U-XV55056, U-XV55066

J	03.03.27	CK
ORIG	03.02.17	CK



APPROVED : CK

WITTENHEIM
 FRANCE

CERTIFIED DIMENSION DRAWING

REMOTE SHUT-OFF VALVE

DIM113519-005

3" CL300 MAPAG AC25-Z-B1JU10/40C-LS